



ELECTROMECHANICAL CONTRACTING L.L.C



***Company  
Profile***

# Content

About us

Mission, Vision & Values

What We Do?

Services

Areas of Expertise

Organization Chart

Management Responsibility & Quality Assurance

LUCE Strategy

Our Projects

Contact US





# About Us

Luce Electro-mechanical Contracting Company, based in Abu Dhabi, UAE, offers comprehensive MEP services for building systems, focusing on designing, analyzing, and optimizing mechanical, electrical, and plumbing systems in residential, commercial, industrial, and institutional buildings



## Mission

Enhancing building systems by delivering innovative, cost-effective, and environmentally sustainable electro-mechanical solutions while adhering to the highest standards of quality



## Vision

To be the trusted leader in MEP solutions, known for our technical expertise and high professional standards and values.

## Values

- **Excellence:** Delivering exceptional MEP services through continuous improvement, innovation, and a dedication to quality in every project.
- **Sustainability:** Prioritizing eco-friendly solutions to minimize environmental impact.
- **Safety First:** Take responsibility for oversight and implementation of the company's health and safety policy.

# What We Do?

We provide quick & quality services  
Electrical Troubleshooting is our specialty.

**Mechanical  
Contracting**

**Electrical  
Contracting**

# Electrical Contracting Services:



**Design & Build of LV (Low Voltage) Electrical Works .**



**Design & Build of Fire Safety Systems:**

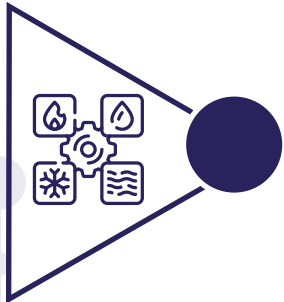
- Fire Detection Systems
- Emergency Lighting Systems
- Fire Fighting Systems



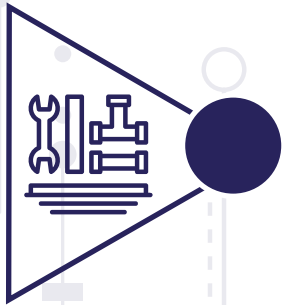
**Design & Build of ELV Systems works:**

- Structured Cabling System
- CCTV System
- Access Control System
- Audio Visual System
- BGM Sound System
- Intercom System

# Mechanical Contracting Services:



**Design & Build of HVAC (Heating, Ventilation, and Air Conditioning) Systems**



**Plumbing Works:**

- Water Supply System
- Drainage System
- Storm Water System
- Irrigation System

# Areas of Expertise



## **Building System Design & Optimization:**

Specializing in creating efficient and sustainable MEP systems (Mechanical, Electrical, and Plumbing) tailored to residential, commercial, industrial, and institutional build.

## **HVAC Expertise:**

Deep knowledge of Heating, Ventilation, and Air Conditioning systems, including design, installation, and maintenance of chillers, boilers, air handling units, ductwork, and control systems.

## **Maintenance and Repair:**

Quick response and effective troubleshooting capabilities for diagnosing and repairing issues with mechanical, electrical, and plumbing systems to minimize downtime and disruptions.



# Quality Assurance

## Quality Policy:

Luce Electro-Mechanical Cont. Operates its business with an effective Total quality management system (TQM) and aims to become one of the leading MEP contractors in UAE by providing high priority for implementation system.

Our quality policy is to provide products and services that consistently meet or exceed customer expectations with industry regulations.



# Management Responsibility

**The Management and Staff of Luce are well-committed and strive hard to :**

- Provide quality and value-added services to our valued clients and customers on time and within budget.
- Identify the changing needs and expectations of our Clients, Customers, and Subcontractors & Vendors.
- Maintain and improve continually the company's process and procedures which ensure that these changes can be accommodated.
- Provide a hassle-free work environment to all our staff where continuous improvement of all our TQM is encouraged.
- Induct and train all our staff sub-contractors and vendors by the requirements of our management system to meet our policy requirements.
- Monitor our system performance through regular internal audits and take necessary corrective measures to improve the system for us to achieve the required performance.





## Quality Objectives:

- To win major projects in the industry
- To successfully execute projects within the budgeted cost and time
- Continuous development of competence & skills of our human resources.



# LUCE Strategy to Approach the Projects

## 1. Engineering procurement:

- Receiving all technical documentation from the main Consultant/Main Contractor Including all submitted shop drawings and technical material submittals.
- Ensure that the latest log sheet for shop drawings and material submittals with the approval status for each item is accurate.
- Provide a new submission plan with dates for the balance of the non submitted shop drawings or material technical submittals.
- Proceed with the final negotiations with the suppliers to provide necessary technical submittals as soon as possible.
- Recheck the long lead items sheet and make sure that the orders are issued or to be Issued as soon as possible





## 2. Works Execution

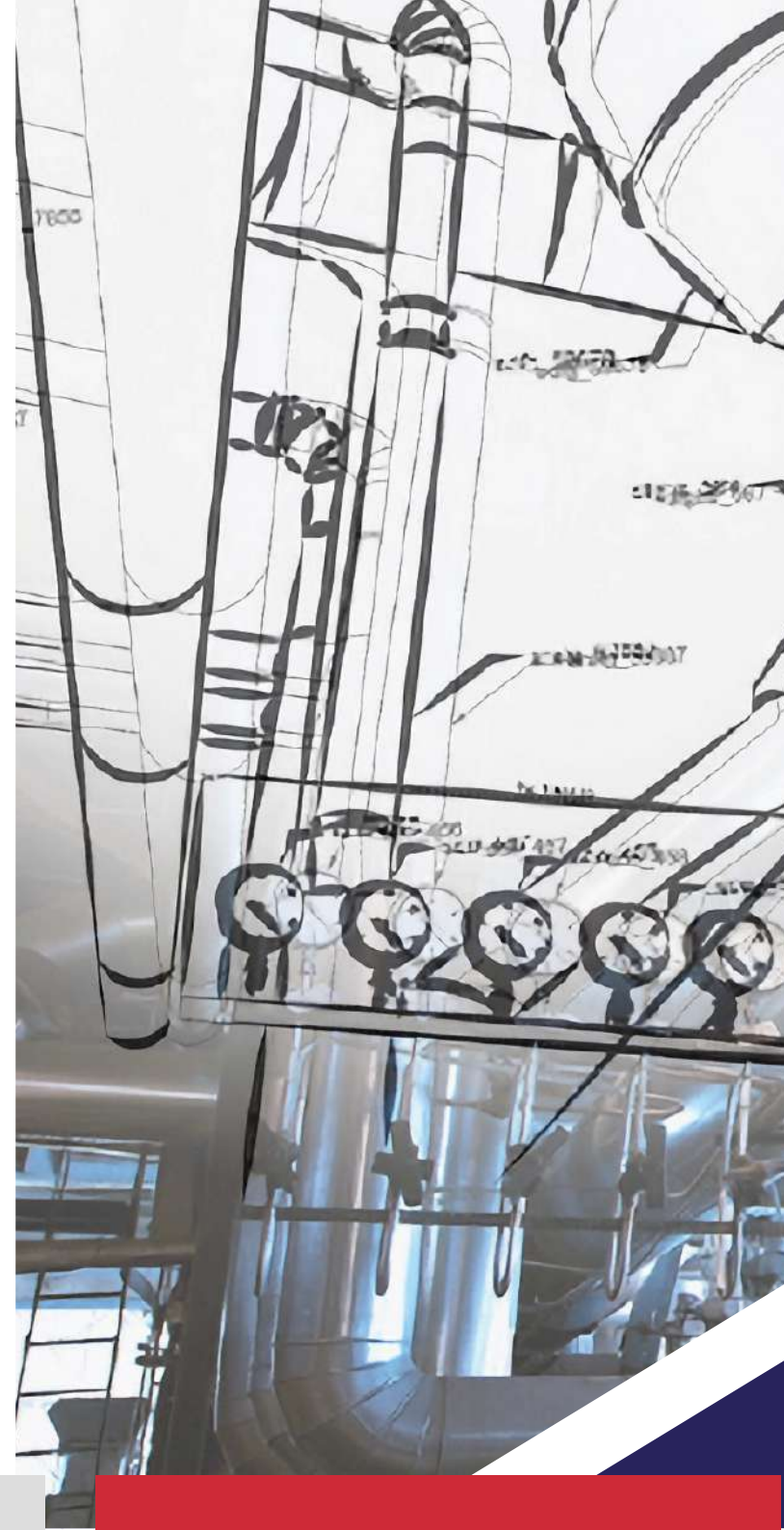
- Provide an initial site condition or progress report and analyze the issues that might be a reason for any delay.
- The project manager must make sure that he is aware of all aspects of the project progress plan and do the needful to match the project program with full coordination with the civil contractor and all sub-contractors.
- Receive all MEP documents (shop drawings, material submissions, IR's, etc.).
- Proper communication with all site engineers and follow-up RFI's, IRs, and MIR's.
- Monitoring and quality control on a daily basis to ensure that the works are done according to the approved drawings and materials, including the proper method of installation for all kinds of equipment and other materials.
- Make sure that all drawings are up-to-date in accordance with site conditions.





### 3. Project Closing & handing over

- Testing and commissioning, including necessary testing reports.
- Authorities' final inspection and handing over.
- Preparation of a full set of as-built MEP drawings.
- Follow up with all suppliers to provide a full set of maintenance manuals, including warranty certificates and a recommended maintenance schedule





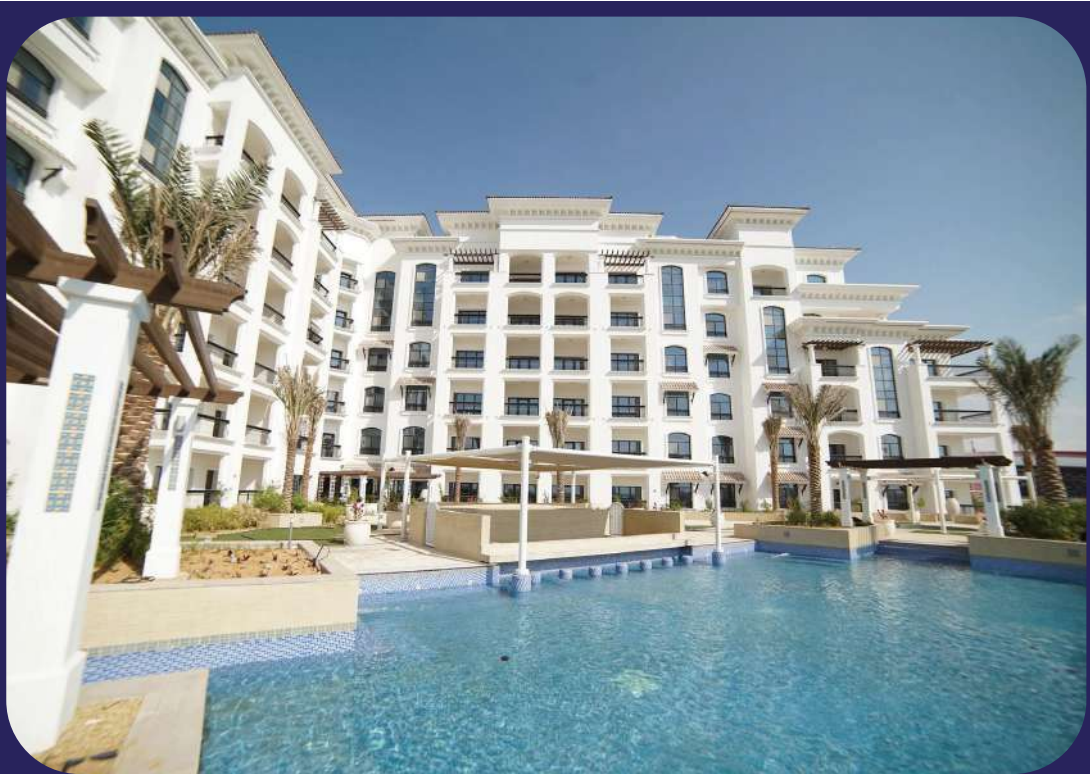
# Our Projects



# Reem Mall

Abu Dhabi - UAE





# Ansam Yas Island

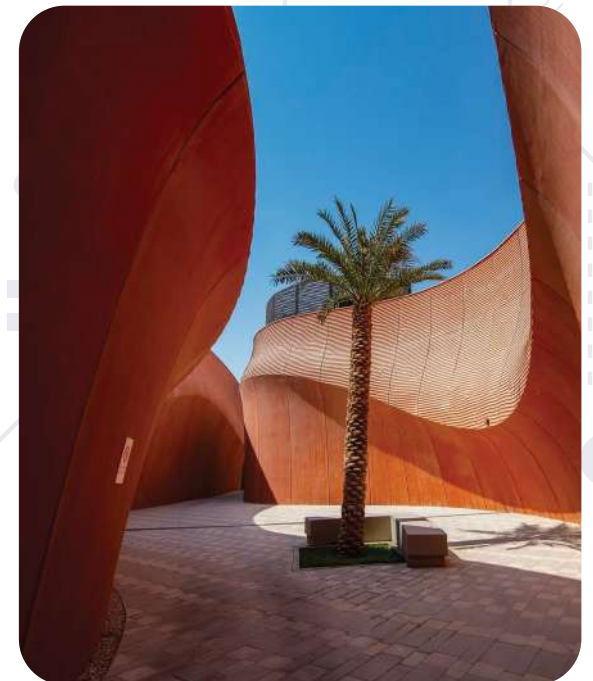
Abu Dhabi - UAE





# UAE Pavillion

Masdar City - Abu Dhabi - UAE







## VIP Villa

Abu Dhabi - UAE

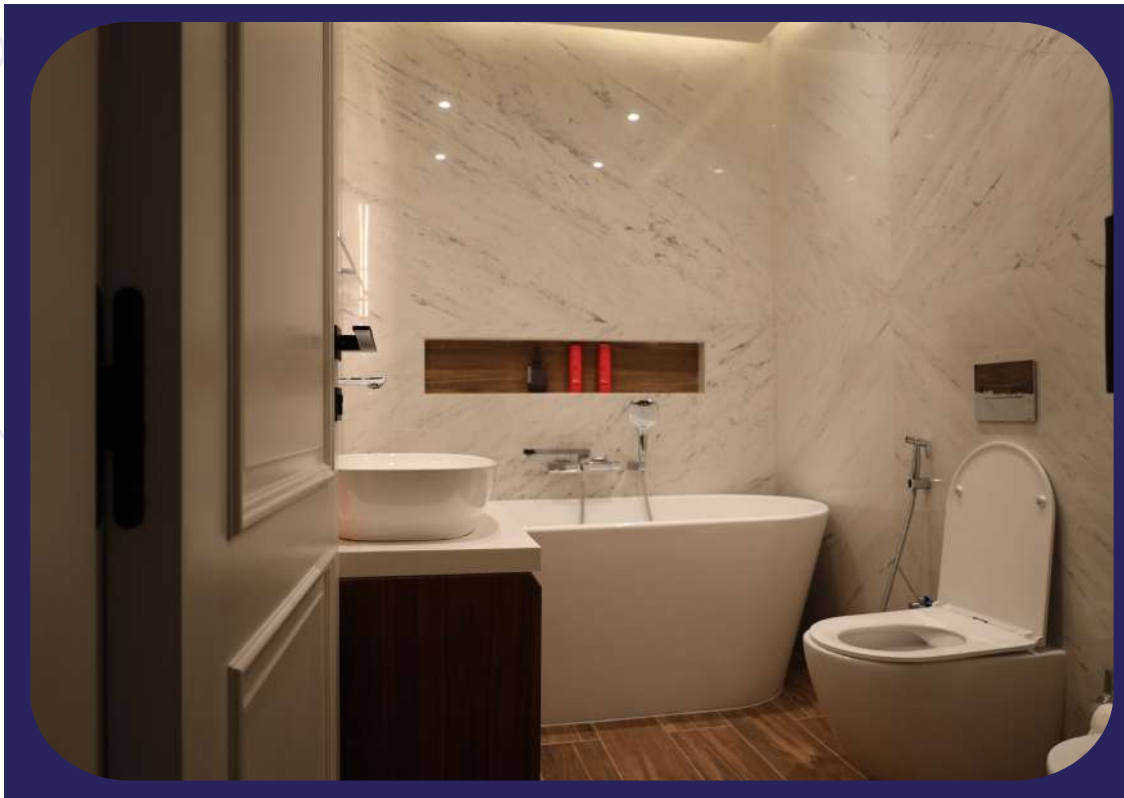


# Expo Project

Dubai - UAE







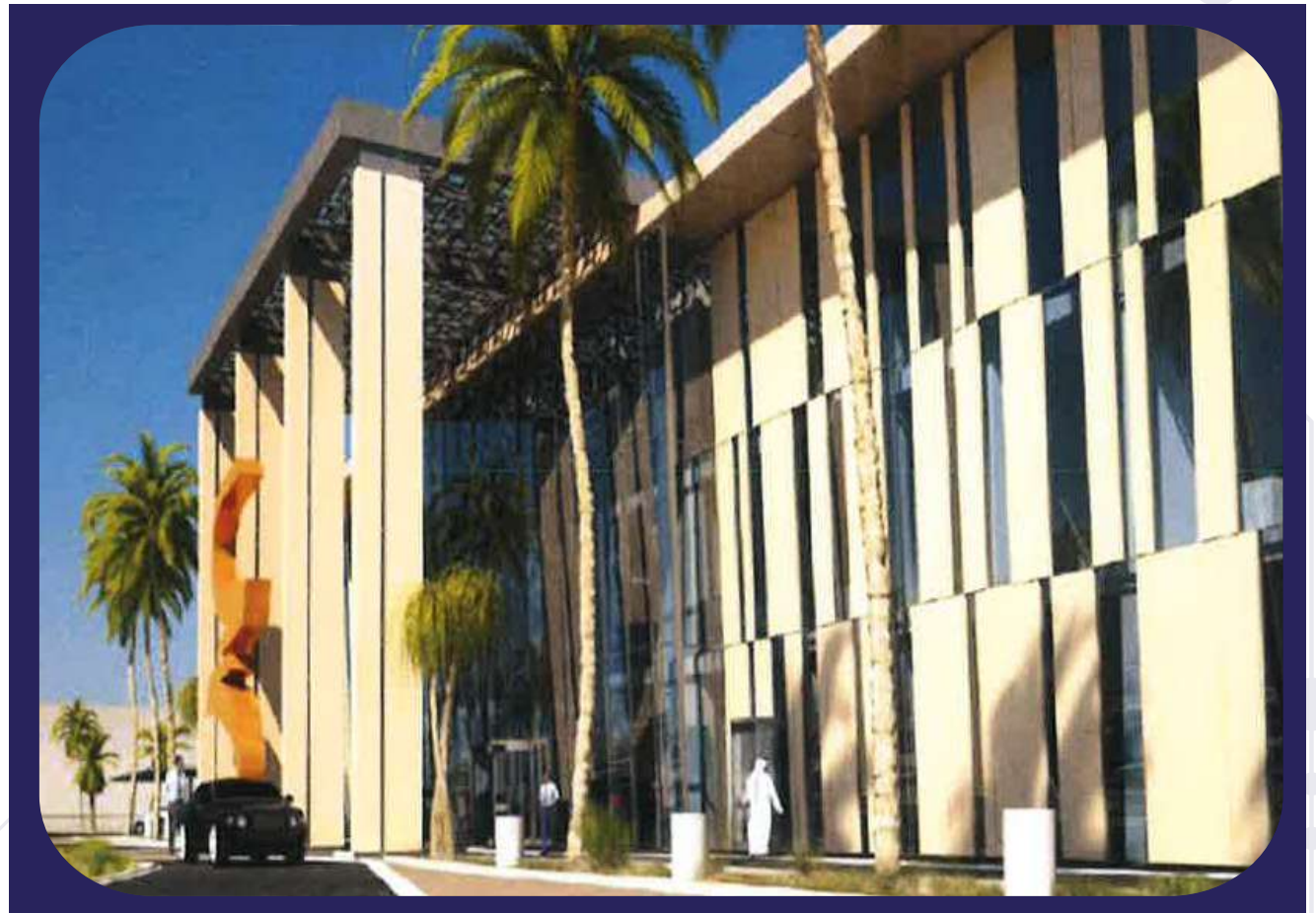
## Exclusive Apartment

Abu Dhabi - UAE



# Igg Advanced Industrial Facilities

Tawazun Industrial Park



# Mohamad Shommam Al Mamari Commercial Building

Abu Dhabi - UAE





# Chilled Water Pumps & Network

Abu Dhabi - UAE



# Crystal Plastic Factory

Abu Dhabi - UAE





# Thanaya Commercial Building

Abu Dhabi - UAE



# Global Indian International School

Abu Dhabi - UAE



# VIP Villas

Al Nahyan - Abu Dhabi - UAE





# Commercial Building

Abu Dhabi - UAE



# Oasis Residential Complex

Abu Dhabi - UAE





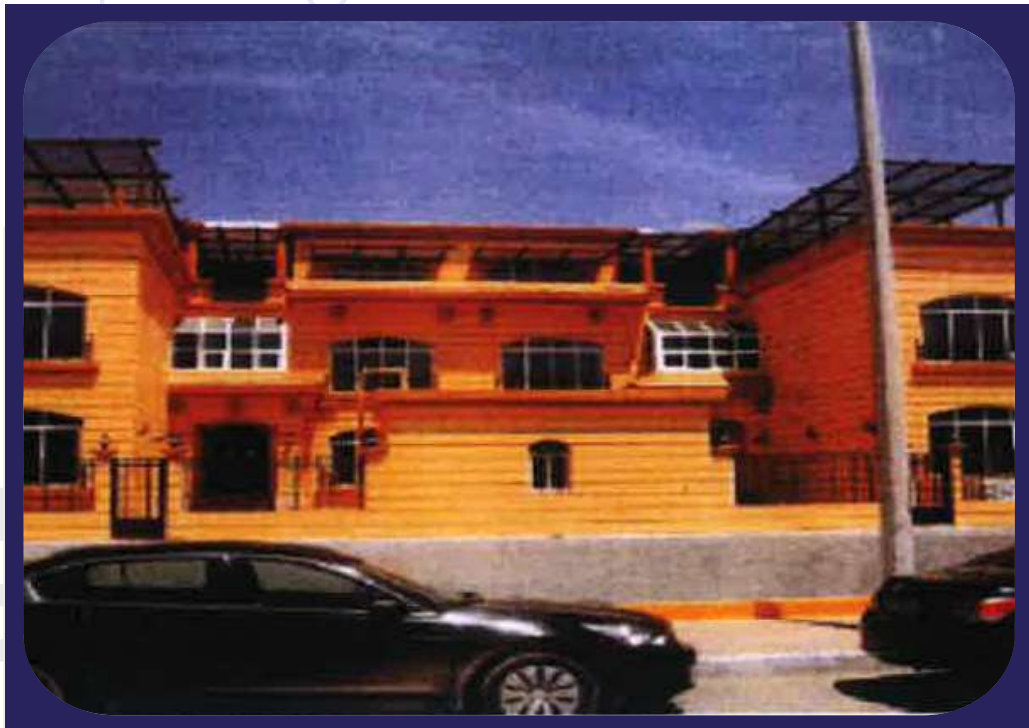
# Commercial Building

Abu Dhabi - UAE



# Villas Complex

Abu Dhabi - UAE



# Commercial Building

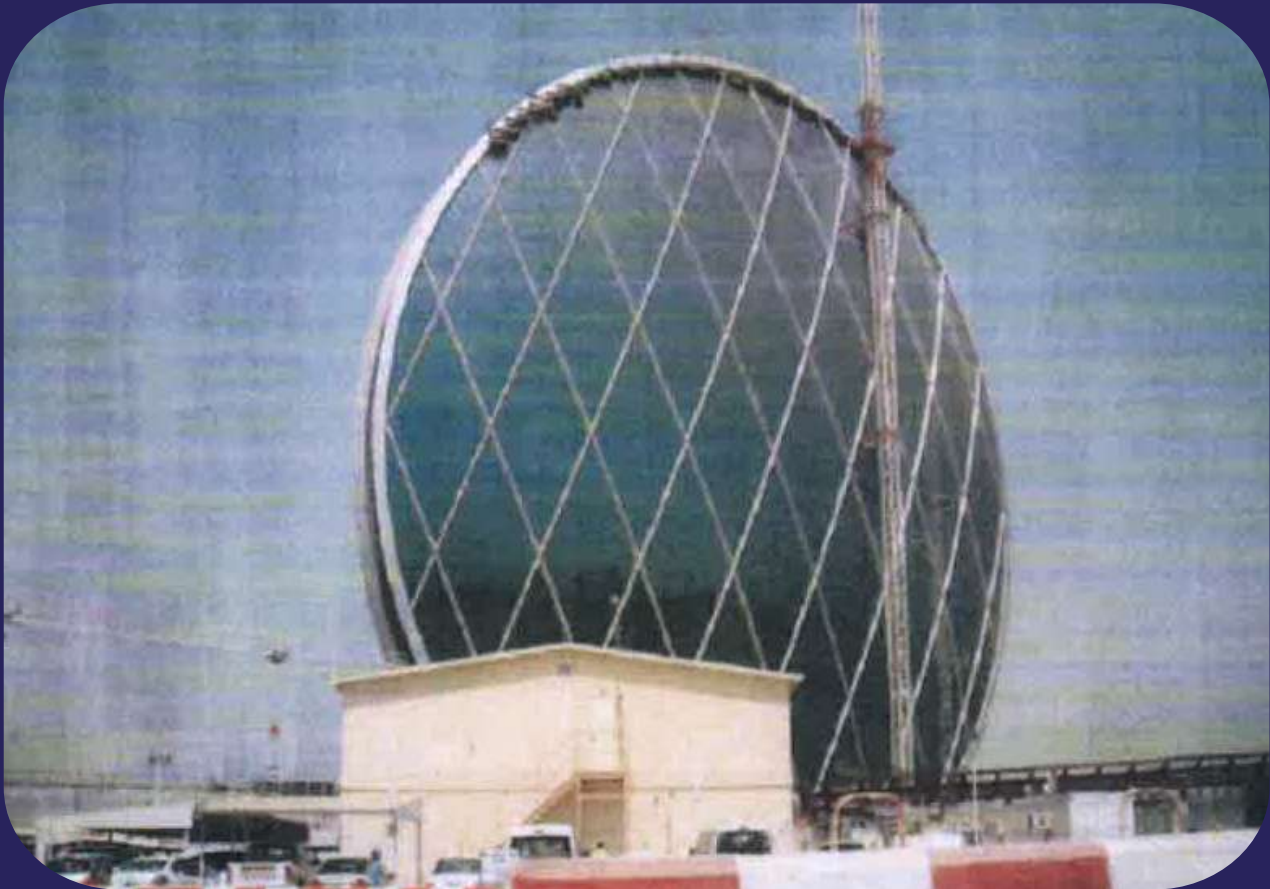
Abu Dhabi - UAE





# Al Dana Residence

Al Raha Beach - Abu Dhabi - UAE



# Private Villas

Abu Dhabi - UAE



# Offices Building

Abu Dhabi - UAE





# Sheikh Zayed Bin Sultan Al Nahyan Mosque

Old Al Bahya - Abu Dhabi - UAE



# Compressed Air System

Abu Dhabi - UAE



# HVAC System

Abu Dhabi - UAE





# Underground Chilled Water Network

Abu Dhabi - UAE



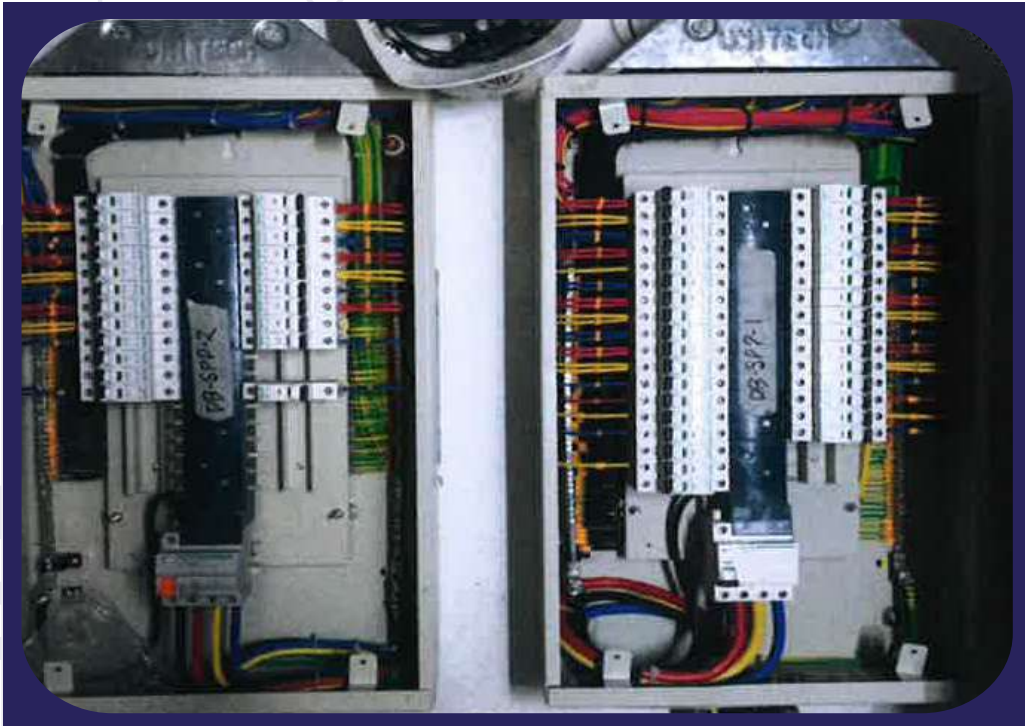
# Generator Set & Fuel Tank System

Abu Dhabi - UAE



# Electrical Switchgear & Panels

Abu Dhabi - UAE





# Mosque

Abu Dhabi - UAE



# Interior Works

Abu Dhabi - UAE



# Clothing Sewing Factory

Abu Dhabi - UAE





# Fire Fighting System

Abu Dhabi - UAE



# Transformers

Abu Dhabi - UAE



## Contact Info

☎ +971 2 674 0002

✉ [info@luce-emc.com](mailto:info@luce-emc.com)

📍 Office 1201, Addax Tower,  
Al Reem Island, Abu Dhabi, UAE.

